

4207 DOUBLE ACTING SELF-CENTERING ACTUATOR

The 4207 is a double-acting and spring-centered air actuator. The rod-lever configuration provides fourteen (14) different strokes which could be positioned into eight (8) different planes by rotating the rod end cap.

APPLICATIONS

Used in conjunction with pressure control head 2543, the 4207-A provides infinite positioning in two directions. It is best suited for accurate positioning and control of variable hydraulic pumps, variable hydraulic valves or governors.

When used in conjunction with Kobelt control heads 3609, 2544 and 2545, the 4207-C is a most versatile 3-position cylinder providing fourteen (14) different strokes.

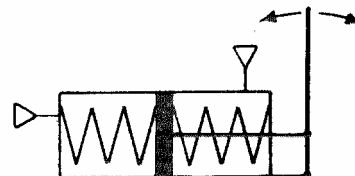
SPECIFICATIONS

Weight: 7.5 lb (3.4 kg)
Materials: Die cast silicon bronze and stainless steel
Maximum Input Pressure: 150 p.s.i. (11.4 bar)
Operating Temperature Range: -20°C to +70°C
Pipe Port Size: ¼" N.P.T.
Stroke: approx. 2 3/8" each way at longest lever position.

Lever position:

4207-A:	8 lbs @ 80 psi
4207-C:	60 lbs @ 100 psi

SCHEMATIC SYMBOL



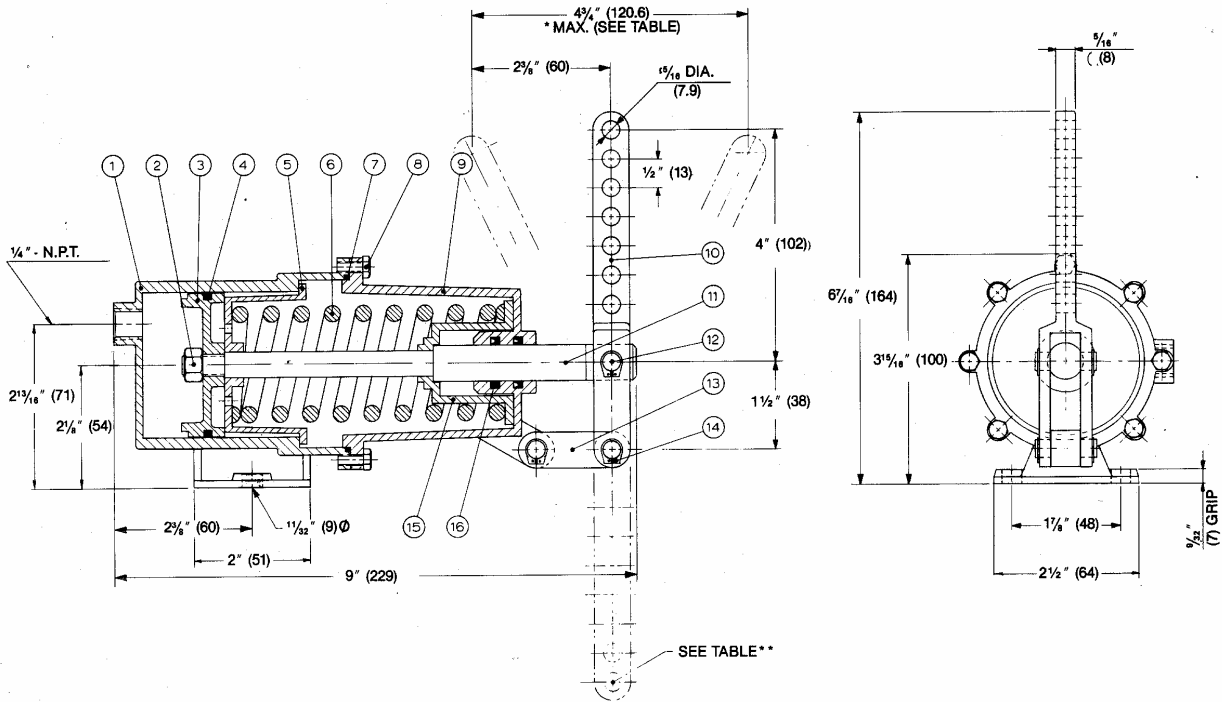
ORDERING INFORMATION

4207-A	2-direction Positioner Actuator 10-80 psi range
4207-C	3-position clutch cylinder 25-55 psi range

Other ranges are available upon request.

DIMENSIONS AND PARTS

4207



All dimensions in inches (mm)

ITEM	QUANTITY	PART NUMBER	DESCRIPTION
1	1	4207-0001	Actuator barrel (rear)
2	1	1022-0162	Nut
3	1	4207-0007	Piston
4	1	1101-0228	"O" Ring
5	1	4207-0006	Spring retainer (extend)
6	1*	1201-0018	Spring (4207-A)
6	1*	1201-0019	Spring (4207-C)
7	1	1101-0040	"O" Ring
8	8	1001-0808	Hex head cap screw
9	1	4207-0002	Actuator barrel (front)
10	1	4207-0003	Fork lever
11	1	4207-0008	Piston rod
12	3	4207-0009	Pin
13	1	4207-0004	Lever linkage
14	6	1029-1031	Snap ring
15	1	4207-0005	Spring retainer (retract)
16	2	1102-0006	"U" cup

* Quantity may vary with option

14 STROKES ARE AVAILABLE		
4 3/4	(120.6)	* STROKE AVAILABLE AS SHOWN
4 5/16	(109.5)	
3 7/8	(98.4)	
3 7/16	(87.3)	
3	(76.2)	
2 9/16	(65.1)	
2 1/8	(54.0)	** STROKES AVAILABLE WITH INVERTED FORK LEVER
3 3/8	(85.7)	
2 15/16	(74.6)	
2 1/2	(69.5)	
2 1/16	(52.4)	
1 11/16	(42.9)	
1 1/4	(31.8)	FORK LEVER
13/16	(20.6)	